



Southampton Local Safeguarding Children Board

Annual Report 2012-13

Contents

Chairs foreword	3
1 Introduction	4
2 Governance and Accountability	4
3 Progress and Achievements	7
Quality Assurance	
Reports to Board	
Extraordinary Meetings	
The Work of Sub Committees	
Business Plan	
4 Inspections	15
5 Priorities for the coming year	17

Appendix 1: Membership of Southampton Local Safeguarding Children Board

Appendix 2: Dataset for Southampton Local Safeguarding Children Board.

Chair's foreword

As the chair of the Local Safeguarding Children Board for Southampton, I am pleased to present this annual report covering the period from April 2012 to March 2013. I came into post during the autumn 2013 and so while I was not in the chairing role during the time period covered by this report I have reviewed the information contained within and am reflecting on this from that position.

The Board is established in law with the purpose of satisfying itself as to the effectiveness of member agencies in keeping Southampton's children as safe as possible. It is expected to challenge the work of members and providers of services to assess performance and highlight areas of strengths and weaknesses. It is also expected to coordinate work in Southampton to safeguard and promote the welfare of children and young people in Southampton.

To enable the Board to meet these objectives it has an annual business plan. The priorities from the 2012-13 business plan are listed in the appendix and an appraisal and commentary of achievements against these is given in this report.

The Board's statutory duties and functions are detailed in Working Together¹. The guidance identifies that there needs to be systematic and regular scrutiny of local provision, and resulting action following challenge of where change is needed. A review of the work during the year 2012-13 shows some evidence of this challenge and influence. For example the way in which the Board influenced Local Authority budget setting. During this year the Board held an extraordinary meeting to consider the impact of the proposals on children and young people and their families. This meeting challenged proposals and proposed changes to the budget. The work resulted in amendments being adopted to the Council budget plans.

I feel there is still much to do to ensure that the Board is robustly and systematically delivering its unique role to scrutinise local services to ensure they are safeguarding children and young people, and this is reflected in our Business Plan for 2013/14. Adoption of the South East Quality Assurance Framework in Southampton will aid the Board in doing this and will help us to become in effect, a local inspection unit for the City in regards to safeguarding children and young people.

The Board continues to face challenges in how we ensure that the voices of children, young people and their families are meaningfully reflected in our work. This needs to be a key focus of our activities and this is recognised in the LSCB business plan for 2013/14 and will be one of my key priorities to action. I plan to lead a real focus on engaging with

Southampton's diverse communities and families on safeguarding issues building on some good practice demonstrated during this year.

When a child dies or is seriously injured and the case meets the criteria for 'serious case review' as defined in Working Together, the Board has a statutory duty to deliver and publish a report which clearly states lessons to be learned for services to prevent similar tragedies occurring. In 2012-13 the Board received the report of the case of Child F, a child harmed by ingestion of methadone and also Child G, who tragically died. Both reports contained significant learning. During 2012-13 the Board received updates on progress of actions coming from Child F; the board also delivered learning workshops to professionals from local agencies. The findings from the review of Child F influenced some significant changes in practice locally during 2012-13 particularly in relation to safeguarding children and young people through adult focussed services such as substance misuse. As a Board we will work on our processes to ensure they are systematic and robust to enable lessons to be learned and changes implemented as part of our learning and improvement framework.

The Board is in a unique position to coordinate safeguarding activities. During 2012-13 the Board showed promise of strategic development, including the focus on Early Intervention reflected in our Business Plan and current work, particularly looking at how we coordinate and evaluate multi agency safeguarding training and have oversight of developments in the city that will have an impact on safeguarding issues such as the Multi Agency Safeguarding Hub (MASH).

I am pleased to report that Board membership is wide ranging which is positive and highlights the dedication locally to ensuring partnership working to safeguard our children and young people. It is a challenge to chair large meetings as size inhibits discussion and scrutiny which is one of our key functions. Throughout the work in 2013-14 I will work towards finding a way of ensuring the structure of the Board and its governance allows for the Board to deliver its core role.

I welcome this opportunity to lead the Board at this challenging and changing time and the work to ensure the safeguarding and welfare of our children and young people, and look forward to reporting progress and analysis of this in the annual report for this current year.

Keith Makin

¹ The 2013 version of this guidance came into effect outside the timeframe of this report.

1 Introduction

- 1.1 This report sets out the activities delivered by and performance of Southampton Local Safeguarding Children Board (LSCB) during 2012-13. This information provides a baseline and a focus for the business plan and activities for 2013-14. The information contained within has been gathered from a review of minutes of board and sub committee meetings along with the knowledge of board and sub committee members.
- 1.2 Section 13 of the Children Act 2004 requires each Local Authority to establish an LSCB for their area, and specifies the organisations and individuals that should be represented. The LSCB has a range of roles and functions including developing local safeguarding policy and procedures and scrutinising local arrangements. Working Together and the Children Act set out the objectives and functions of LSCB's as to:
- coordinate what is done by each person or body represented on the Board for the purposes of safeguarding and promoting the welfare of children in the area; and
 - ensure the effectiveness of what is done by each such person or body for those purposes.

2 Governance and Accountability

- 2.1 The LSCB has a constitution which sets out the membership, objectives and functions of the board in accordance with the Childrens Act 2004.
- 2.2 The LSCB employed Donald McPhail as its Independent Chair during 2012-13, responsible for:
- Chairing the Board's bi-monthly meetings
 - Chairing of the Executive Group
 - Providing direction on emerging issues from serious case reviews
 - Attending and challenging the Children and Young People's Trust Board
 - Supporting sub committees chairs to progress the business plan
 - Supporting Southampton City Council scrutiny function in relation to safeguarding
 - Chairing the Serious Case Review sub committee

2.3 Business function

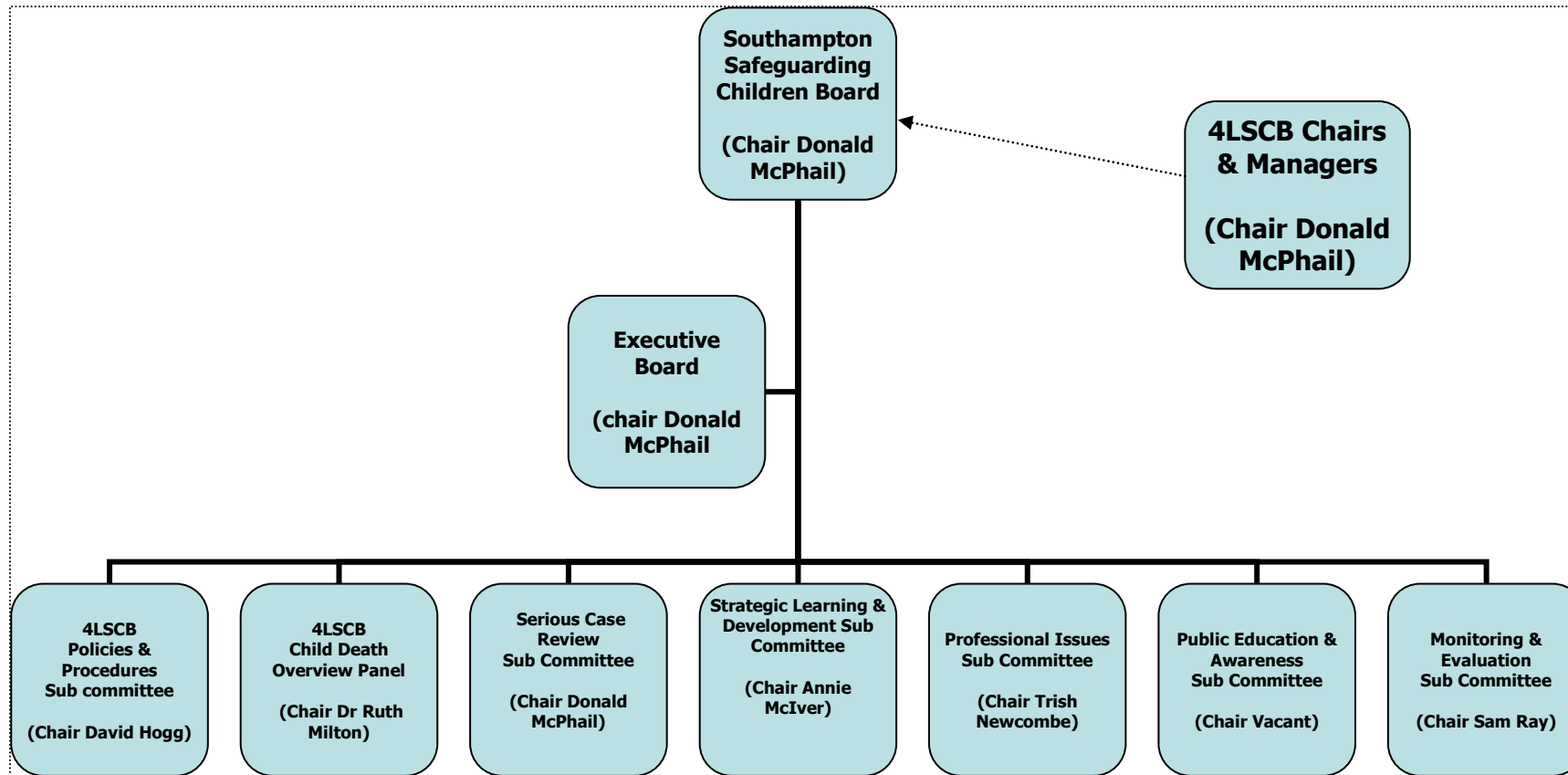
The LSCB has a business office function that includes the roles of full time Board Manager and Business Co-ordinator. The business office experienced a period of change during this year as the permanent post of Board Manager was temporarily filled from April to August 2012, with a permanent Board Manager in post from August 2012 - March 2013, this Board manager then left the post at the end of March 2013². The Business Co-ordinator post was occupied during 2012-13³ providing some continuity. Southampton City Council Democratic Services provides clerical support to the LSCB Main Board and Executive.

² A new Board Manager also came into post in June 2013.

³ A new Business Coordinator came into post in September 2013.

2.4 Structure

The Board structure during 2012-13 was as follows:



Southampton LSCB linked also to the following local partnerships:

- Southampton Children and Young People's Trust Board
- Southampton Safeguarding Adults Board
- Southampton Safe City Partnership
- Southampton Health and Wellbeing Board

2.5 4LSCB's

Southampton LSCB participated during 2012-13 to the '4LSCB' arrangement whereby the Hampshire, Portsmouth, Southampton and the Isle of Wight boards join

to share policies and practice across the county. The mechanism for this to be delivered is the Chairs and Managers Group which was chaired during 2012-13 by Donald McPhail, Southampton LSCB Chair. The work of the 4LSCB's also links through its policy and procedure work to ensure consistency across the county, shared guidance for professionals as well as policies and procedures can be accessed via www.4lscb.org.uk. The 4LSCB's also pool resources to provide the Child Death Overview Panel function in one pan Hampshire service.

2.6 Frequency of Meetings

The Full Board met bi-monthly with membership reflecting statutory guidance contained within Working Together. See Appendix 1 for a full list. The Executive of the LSCB met bi-monthly between full board meetings to plan agenda's and support the main Board with business performance, highlighting areas for development. Membership of the Executive during 2012-13 is listed in Appendix 1.

The LSCB sub committees, as detailed in the structure chart above, met according to their terms of reference and at least quarterly throughout the year. Chairs of the committees reported to the LSCB main board via headline reports, they also met regularly as a group with the Independent Chair.

2.7 Financial Contributions

Contributions to the 2012/2013 budget were received as follows. This is in accordance with contributions previously agreed and documented within a Pooled Budget Agreement:

Source	£
Southampton Clinical Commissioning Group	31,426
Police	12,533
Hampshire Probation	2,504
CAFCASS	550
Southampton City Council	73,756
Area Based grant (for CDOP)	6,300
Total contributions	127,069
Balance brought forward from 11/12	38,359
Total	165,428

3 Progress and Achievements

3.5 Quality Assurance

In 2012-13 Southampton LSCB ensured scrutiny of local work to safeguard and promote the welfare of children in the following ways:

- Reports to Board in the format of; Standing Items, Reports to the board – as annual reports or those requested by the Independent Chair and board members.
- Extraordinary meetings
- The work of the sub committees – reported at each main Board meeting

The narrative below gives a description of activities undertaken by the LSCB to deliver its quality assurance role.

3.6 Reports to Board:

The Board requested updates and reviewed progress on the following standing items issues at each meeting:

- Leadership reports from: Social Care, Police, Schools, Health to include issues around budgets and retention of key staff.
- Issues and challenges to the Children and Young People's Trust.
- Child Death Overview Panel – Quarterly Report.
- MAPPAs – Multi Agency Public Protection Arrangements.
- MARAC – Multi Agency Risk Assessment Conferences.
- CAFCASS – Children and Family Court Advisory and Support Services.
- Issues from Inspections.
- Issues from other agencies and partnerships including any capacity issues / organisational changes.

3.7 Reports requested and submitted to the LSCB during 2012-13 were as follows:

1. Midwifery Audit of Safeguarding Processes and Information sharing with GP's

An audit of safeguarding processes and information sharing with GP's as a result of a Serious Case review in Southampton. Board members scrutinised the report and advised further recommendations which were followed up by the services involved.

2. Grading Policy for Hampshire Constabulary

The board received and endorsed a report detailing revised grading policy for responses by police to child abuse cases. This policy was bought about from a Partnership Review of a case in Southampton.

3. Children First Contact Audit

A report detailing key findings and recommendations from an audit of the contact service in Children's Social Care, this was commissioned by the LSCB to look into cases that did not reach the threshold criteria outlined in the published guidelines for referrals to social care. Findings highlighted concerns to the Board, and recommendations resulting from this audit were passed to the Children & Young People's trust for action.

- 4. Domestic violence and abuse in Southampton**
Details of a new initiative to coordinate responses to domestic abuse and improve outcomes for families experiencing abuse were presented to the Board. The Board endorsed the proposals and requested progress reports on this issue.
- 5. Honour Based Violence and Forced Marriage**
Details of work in Southampton to respond to these issues was presented, the Board suggested an annual report should be submitted.
- 6. Southampton Joint Health and Wellbeing Strategy**
Consultation draft received of this document, Board members challenged the content due to; lack of focus on safeguarding children and young people, caution about expectations of doing more for less in terms of resources, and a need for more emphasis on disabled children.
- 7. Health CQC inspection**
The Board received feedback and updates on progress regarding the actions identified by the CQC inspection, particularly regarding the availability of examination facilities for children and young people that had been victims of sexual assault. This action was completed and the board received feedback on this.
- 8. Progress of OFSTED Action Plan**
A plan as a result of the OFSTED inspection in 2012 (see p15 for more detail) was presented to the LSCB, with explanation of actions to be taken.
- 9. Looked After Children living away from home**
The Board received a report detailing the number of LAC who were placed away from Southampton, missing from placements and those in bed and breakfast accommodation. The Board requested 6 monthly updates from the Local Authority on this matter.
- 10. Welfare Reforms**
The Board received a report detailing the reforms implemented nationally and the impact predicted on children and families in the City.
- 11. Escalation Policy and Notification of Incidents**
The Board sought assurance that local agencies were aware of escalation policy and correct procedure around notifications of incidents to senior managers where safeguarding children and young people was an issue. This was as a result of a recent Serious Case Review.
- 12. Child Sexual Exploitation**
A report was considered giving detail of CSE and the LSCB's role in tackling this issue in Southampton. Links to national work were considered and the Board agreed to establish a group to drive this agenda on behalf of the Board.
- 13. Young People and Prostitution**
The Board requested a report following an issue raised by members, and received information from local services on the scale of the issue in the City.
- 14. Multi Agency Supervision**
The Board heard from local services regarding multi agency supervision and a workshop to develop this area. The Board recommended this was implemented as soon as possible.
- 15. Independent Schools**
The Board sought clarification of allegations and investigations into abuse incidents within an independent school in the County which had children from Southampton attending. The Board then sought assurance of the standards for safeguarding that were in place from commissioners of independent schools including academies and free schools as well as independent providers of other services.
- 16. Local Authority Designated Officer (LADO)**
The annual report of the Local Authority Designated Officer for 2010/11 and 2011/12 was received by the board. It was noted that a plateau appeared to have been reached in terms of the volume of referrals. There had been some positive developments, specifically with regard to physical intervention in

schools and risk by association assessments. It was noted that the role of the LADO was being reviewed within the Local Authority specifically to involve Human Resources. Reference was made to an alleged incident at an Independent School outside the Local Authority area. The Board noted it was important any learning from the review of this should be shared with the independent schools in the city.

17. **Fostering Services**

The Board received a report detailing safeguarding in Foster Care Services. It was noted that in December 2011 the Fostering Service was inspected by Ofsted and received an Overall quality rating of 'Outstanding' and the section entitled "Protecting children from harm or neglect and helping them stay safe" was judged as Outstanding. The Board noted the Safeguarding allegations that had been made in the last year in relation to Local Authority Foster Carers. There had been 8 allegations in total, 4 at level 1, 1 at level 2 and 3 at level 3. The Board noted that examples of a level 2 allegation was over chastisement and level 3 was child protection issues such as physical abuse/injury. The following outcomes were noted:-

- All of the level 1 were No Further Action
- The Level 2 allegation was unfounded. Further matching work took place with the carer regarding the placement of children in the 0-3 age range.
- Of the 3 level 3 allegations, the first was no further action, training and support was offered to the carer. The second was substantiated and at panel agreement was made to change their approval (boys only), and for the carers to attend a range of training prior to another child being placed. The third level 3 was currently ongoing. This allegation was historical but due to the young woman disclosing further details the police had chosen to reinvestigate. The service was currently awaiting the outcome of the investigation.

3.8 Extraordinary Meetings & Workshops

Local Authority Budget Proposals

Proposals for the Local Authority Budget in future years were brought to the board in a detailed presentation focusing on the impact these may have on safeguarding and promoting the welfare of children and young people. An extraordinary meeting was held to receive feedback from Board members on the proposals, and Board members scrutinised the impact of the proposals within their own agencies feeding into this meeting. As a result the Board Chair challenged the proposals with the Local Authority.

Early Intervention Workshop

A workshop to look at the role of the Board in delivering and evaluating Early Intervention work took place and actions to follow up were agreed.

3.9 The work of Sub Committees

Serious Case Review Sub Committee

- Case reviews delivered and action plans that were monitored by the group over this period included:
- Serious Case Review of Child F (published October 2012)
- Serious Case Review of Child G (completed November 2012)
- Partnership Reviews for 3 cases.

Actions that were monitored and subsequently signed off as a result of SCRs include:

- A clear pathway for domestic violence referrals produced – through Pippa (local alliance of domestic and sexual violence services) and IRIS (GP focussed domestic abuse work) and enhanced training.
- Drug Action Team conducted a case note audit which was partly focused on safeguarding as a result of the SCR recommendation.

- Police offer guidance on checks that need to be taken, when analysing the risk of repeated abuse in a household.
- All officers and staff in the Police Public Protection Central Referral Unit and Public Protection Unit Investigation Teams, provided with the latest single and multi-agency guidance on identifying and responding to allegations of complex child abuse.
- The Child Abuse Investigation Grading Policy was amended to explicitly include complex child abuse investigations as Grade A referrals for allocation to Child Abuse Investigation Teams.
- Development of forms and assessment tools to identify safeguarding concerns across the health disciplines to ensure professionals are:
 - clear regarding their purpose and threshold criteria,
 - capturing relevant information, including that of the father/significant male, and
 - clear whether the completion of forms or assessment tools are mandatory or discretionary.
- Report to the Board on the capacity within teams who have been 'Achieving Best Evidence' (ABE) trained in both children services and police
- Ensure current training includes appropriate response when there is an allegation made.

Professional Issues Sub Committee

Policies reviewed and scrutinised by the group:

- Southampton University Hospital Trust Safeguarding Policy and Restraint Policy.
- Southampton Football Club Safeguarding Policy.
- Hampshire Probation Trust Safeguarding Policy.
- Jigsaw (Multi Agency Team – disabled children) Safeguarding policy.
- Society of St James (Homeless charity) Safeguarding Policy.
- Medaille Trust (Human Trafficking victims support charity) Safeguarding Policy.
- Crime Reduction Initiative (health and social care charity) Safeguarding Policy.
- Rape Crisis safeguarding policy.
- Parent Support Link safeguarding policy.
- Started to review Adult Services' policies (continued post April 13).

The group delivered the following actions in response to Child F Serious Case Review:

- Multi agency policy on supervision orders created and agreed.
- Addition made to policy framework to include neglect as a specific issue.
- Domestic violence pathway guidance reviewed.
- Briefing paper produced for Adults and Children's Services on the respective roles and responsibilities of MARAC and Child Protection Conferences.

- Substance Misuse services commissioner requested to report to the board on the extent to which safeguarding standards are being complied with and an action plan.

Monitoring and Evaluation Sub Committee

The group experienced a change of chairing arrangements mid- year. The framework for reporting data and service updates was revised and the group were presented with detail of:

- Safeguarding data – the group reviewed progress against a previously agreed data, highlighting trends and concerns which were escalated to the main board. The group also suggested a revised data set to be developed and agreed.
- Ethnicity data – a review of the previous year’s data with highlighted issues taken forward to the main board.
- Children Missing Education – following this report issues around recording and high numbers were reported to the board, and it was agreed that regular reports would be made to this group.
- Children Looked After (CLA) education measures.
- Children’s Social Care single agency report - highlighting progress and barriers against an improvement plan following the Ofsted inspection
- Youth Offending Service single agency report.
- LADO report (also reported to the main board).

Audits were undertaken relating to:

MARAC (Multi Agency Risk Assessment Conferences for Domestic Violence), key findings:

- Requirement to be more precise in identifying risks and attaching an action to those risks – this action was fed back to the MARAC Chairs
- LSCB to monitor outcomes and effectiveness of MARACs – action to undertake a small audit tracking the information flow and outcomes of a sample of cases.

MAPP (Multi Agency Public Protection Arrangements), key findings:

- Good multiagency working.
- Concerns about attendance – particularly with regard to Children’s Services and GPs. Actions were proposed.

Attendance at Child Protection Conferences, key findings:

- Issues with GP attendance.
- Housing always send written reports if not in attendance.
- Core group date is not always set.

Issues raised by this group to the main Board included:

- The group reviewed multi agency data which showed that abuse and neglect referrals had risen significantly.

- Impact of the recruitment and retention issues within Children's Social Care such as number of vacancies, agency staff and newly qualified social workers on the performance data and progress of an improvement plan.
- Ethnicity data highlights that all BME (Black and Minority Ethnic) groups are underrepresented in Children Looked After and Children in Need populations. Asian children were particularly under represented (comprising 4% of Children in Need, compared with 11% of children in schools).
- The group looked at the children missing education data. A joint protocol with Health was suggested to agree a position and course of action regarding the high numbers of children missing education that were recorded. Further action was agreed to ensure that track the children.

Public Education and Awareness sub committee

- Developed and published a quarterly newsletter for the LSCB.
- Revised and published the Southampton Neglect Tool.
- Promoted a Barnardos Child Sexual Exploitation information leaflet.
- Linked to Muslim Council of Southampton.
- The LSCB Website was created ensuring publicly available links to procedures and to national campaigns and local services.
- Website included a section particularly targeting parents from EU accession states / new communities in the city.
- Review of a local school pupil survey that was reported to the group.

Strategic Learning & Development Group

- The following child safeguarding training was reviewed by the group against a set of agreed good practice criteria:
- Adult Services training in parenting capability.
- Hidden Harm (Alcohol, substance misuse, mental health & domestic violence).
- Core Groups training.
- Honour Based Violence training.
- Housing Safeguarding Children training.
- The group also sought assurance and reviewed current multi-agency training arrangements, the key findings of this were:
- Voluntary sector take up of training courses was low and the group agreed to monitor this.
- NHS staff rarely attend current multi agency training as they have their own provided in house which it was felt misses the multiagency benefits.
- 1600 attendees at multi agency training over the last financial year, with the largest sector represented being Early Years/Childcare providers.

Child Death Overview Panel (CDOP)

The Child Death Overview Panel function for Southampton is delivered by a pan Hampshire service. The Annual Report for CDOP is published on the following link: [CDOP Website](#)

3.10 Business Plan

The LSCB worked to an agreed Business Plan for 2012-13. This plan was developed based on “the Joint Strategic Needs Assessment, local priorities and delivery of local performance indicators to improve safeguarding outcomes for children and young people” (taken from the Business Plan). The priorities within this plan are listed below, along with a summary of action taken by the LSCB and its partners during 2012-13 to deliver these:

Developing policies and procedures in line with Working Together to include implementation plans by each agency

Southampton LSCB works within a framework of 4LSCB's in Hampshire and the Isle of Wight to ensure policies and procedures are current and easily available to professionals working in the City and across the County. The Professional Issues Sub Committee (PISC) works with the 4LSCB Procedures Group to implement these and a summary of their work during this year is given above under a section entitled The Work of Sub Committees. Working Together was updated at the end of this financial year, and work to update procedures was carried over to the 2013/14. Southampton LSCB website was updated this year and contains clear links to the 4LSCB policies.

Establishing the programme of audits to include single agency and multi-agency audits

A calendar of audits was delivered during 2012-13 as detailed in the Monitoring and Evaluation Sub Committee feedback above. In addition the Board requested feedback from services about the impact budget changes had or were having on retention of staff. This was a regular item on the Board agenda and was fed back within headline reports to Board from statutory partners.

Implementing standards in safeguarding for commissioners and the community and voluntary sector

The Board contributed to a Local Authority Quality Assurance Steering Group during 2012-13 via the Board Manager. The Southampton (Health) Clinical Commissioning Group developed safeguarding commissioning standards for independent providers.

Voluntary sector colleagues worked with National DBS service to brief on changes to the system for voluntary sector organisations and although the CRB/ DBS umbrella service offered by the local Voluntary Sector umbrella organisation (Southampton Voluntary Service) has closed due to lack of funding, a partnership with private sector providers was negotiated and now offers a reduced processing route and ongoing guidance on safeguarding policies and procedures.

Listening to the voices of children and young people to better meet their safeguarding needs

The Board intended to capture the voices of children and young people in existing forums, and to monitor how voices of children and young people were recorded within the audit process, the LSCB audit pro forma included a section to ask about the ‘impact on the child’. In addition a pupil survey for children attending schools in Southampton was planned by the Local Authority during 2012-13 to which the board had links.

Implementing the learning the themes from Serious Case Reviews and Child Death Reviews both national and local

Learning seminars were delivered highlighting the learning from national and local reviews. Over 100 professionals attended learning workshops following the publication of Child F. Board members were well briefed to disseminate learning from both Child F and G cases at main Board and sub committee meetings. Serious Case Review sub committee monitored and evaluated the progress of services in implementing the specific and multi agency lessons learned from Child F and Child G.

Working with adult services to improve outcomes for children and young people

The Board reviewed policies to safeguarding children where focus is on adults in the family in services such as substance misuse and domestic violence. Following the investigation into the Child F Serious Case Review, the Drug Action Team together with Senior Commissioners for SCC took the decision to bring commissioners and providers for the substance misuse services together in order to ensure that actions coming from this were carried out, and that further gaps that were identified in Safeguarding processes in these services were dealt with effectively. The Drug Action Team manager now sits on the LSCB to ensure effective links.

Southampton City Council Adult services delivered a refresher training programme for Adult Social Care staff, due to significant numbers of new staff in service and focussed on improving links between LSCB and the Safeguarding Adults Board. This included the senior manager for Safeguarding Adults attending the LSCB.

Southern Health Foundation Trust amended its safeguarding training to ensure integrated children's and adults safeguarding training to level 2 for all its divisions. The overall compliance of children's safeguarding training in adults divisions is rising and general feedback about its content is positive and encouraging.

Using local data to have a clear understanding about safeguarding needs in Southampton

The Board received and agreed a multi agency data set in quarter 4 of the year to be reported to the Board on a quarterly basis from that point forward. See Appendix 2 for the full list of data.

Maintaining the effective governance arrangements in the Board and Sub committees

Membership of the board was reviewed as required during 2012/13. Additional membership included Drug Action Team Manager and Safeguarding Adults Leads. In addition in Health membership of the LSCB transferred from the SHIP PCT cluster to the Executive Nurse of the CCG. The Designated Doctor and Nurse are advisers to the Board, and are members of the Serious Case Review, Monitoring and Evaluation, Learning and Development and Professional Issues sub committees. The Designated Nurse is also a member of the 4 LSCB pan Hampshire procedures committee.

4 Inspections

4.1 In April 2012 Care Quality Commission and Ofsted carried out an inspection of safeguarding children and looked after children services in Southampton. The Southampton Local Safeguarding Children Board contributed this and a full report of findings can be found on the following link:

<http://www.ofsted.gov.uk/local-authorities/southampton>. The overall effectiveness of the council and its partners in safeguarding children and young people was deemed as adequate.

4.2 Ofsted highlighted that significant challenges had been faced by the council and its partners to reorganise safeguarding services both strategically and operationally over the past two years. They noted that actions taken had resulted in improved performance and practice in some safeguarding areas, for example in the contact and referral services. However, many initiatives are flagged as very recent or are being further developed, and most had yet to be sustained. They noted an insufficient track record of sustained improvement across most safeguarding outcome areas, for example in the timeliness of assessments.

4.3 The main findings were as follows:

Safeguarding services

Overall effectiveness	adequate
Capacity for improvement	adequate

Safeguarding outcomes for children and young people

Children and young people are safe and feel safe	adequate
Quality of provision	inadequate
The contribution of health agencies to keeping children and young people safe	adequate
Ambition and prioritisation	adequate
Leadership and management	adequate
Performance management and quality assurance	adequate

Partnership working	adequate
Equality and diversity	adequate

Services for looked after children

Overall effectiveness	adequate
Capacity for improvement	adequate

How good are outcomes for looked after children and care leavers?

Being healthy	good
Staying safe	adequate
Enjoying and achieving	adequate
Making a positive contribution, including user engagement	adequate
Economic well-being	inadequate
Quality of provision	inadequate
Ambition and prioritisation	adequate
Leadership and management	adequate
Performance management and quality assurance	adequate
Equality and diversity	adequate

- 4.4 The Board received regular updates from the Head of Safeguarding Children at Southampton City Council and Director for Children's Services on improvements made as a result of the inspection through a standing item on the agenda.
- 4.5 The LSCB was highlighted in the Ofsted report as below and specific action to improve performance in areas highlighted were also as follows:

A well coordinated response to children who go missing is guided by a clear SSCB protocol that involves all relevant agencies. Effective risk assessment of each incident takes account of historical factors to ensure that cases are prioritised appropriately.

Health providers have taken appropriate action to address significant deficits in the arrangements for safeguarding children and young people that were identified in recent serious case reviews in the area. This is being closely monitored through governance arrangements, commissioning and reporting through the SSCB.

The Independent Chair of the SSCB has provided strong challenge, for example in relation to the potential threats to safeguarding service delivery posed by recent industrial action in the council. Local priorities have been identified and acted on, for example in relation to neglect following the findings of a serious case review. There is elected member representation on the SSCB, however the Chair has no formal contact with the council's Chief Executive or Leader and this may limit the Board's influence. Furthermore, some service deficits, such as the lack of community paediatric health and forensic sexual assault provision at weekends, had not been formally identified and considered by the Board.

The SSCB and its constituent partners have undertaken work with local mosques and madrassahs to raise awareness and ensure compliance with safeguarding standards.

Through reports and its own audit activity, the SSCB maintains a close view of safeguarding performance across the partnership, and has been instrumental in raising concerns about the performance of safeguarding services within the council.

The SSCB has also collated and reviewed audits by partner agencies. However, it has not conducted thematic audits or systematic, in-depth audits of practice. This is recognised and plans are being developed to begin this work.

However, parents and records indicate that attendance at core group meetings by some professionals such as health visitors and school staff is not sufficiently regular or consistent. The SSCB has recognised this, but has yet to take effective action. Difficulties in weekend access to paediatric child abuse medical examinations and sexual abuse forensic services have been examined at strategic level by health commissioners but have not been identified as a concern by the SSCB.

The SSCB enables partners to work well together overall to deliver and develop safeguarding services. The Board provides some challenge to partners, where services are not performing to a sufficient standard. However, more work is required to ensure that child protection core groups are effective.

- 4.6 In terms of Health, the contribution of agencies to keeping children and young people was judged to be adequate in this inspection and for Looked After Children, the 'being healthy' outcome was judged to be good. A recommendation was made by inspectors in relation to facilities for medical

examination of children under 13years following abuse, including sexual assault to be available at weekends. This recommendation was taken to the Board of Clinical Commissioners (SHIP) and following their support, the service has been commissioned on a Hampshire wide basis and became operational in January 2013. This is a considerable achievement as few areas in England, outside London and the larger cities are able to deliver this service.

- 4.7 Several recommendations were also made by inspectors regarding the Looked After Children Health Team (Solent NHS Trust) team to ensure the health needs of care leavers are adequately addressed. A comprehensive review of capacity within the Solent Looked After Health Team was undertaken by the Designated Nurse and additional resource has been allocated. Accountability frameworks for Looked After Children within Solent NHS Trust continue to be addressed.

5 Priorities for the coming year

- 5.1 The narrative in previous sections provided an opportunity for analysis of the LSCB's success in delivering its core functions and objectives during 2012/13. It is clear from this that the board received much information regarding local services provision and activities and debated and scrutinised some key areas through its main Board meetings and sub committee activities.

- 5.2 There is clear evidence that more needs to be done to continue to develop the boards activities following areas:

1. Governance arrangements – revising constitution, membership and group terms of reference to reflect Working Together 2013.
2. Ensuring the voices of children and young people are integral to the work of the LSCB.
3. Regular and systematic assessment, scrutiny and monitoring of local services and practice to ensure that children and young people are safe.
4. Ensuring that local multi agency training is available and effective at improving safeguarding practice.
5. Development of local Serious Case Review processes to ensure reviews take place and learning is implemented in a timely manner.
6. Be clear about thresholds for services, including early help services and publish a document explaining this.
7. Ensure local awareness of safeguarding issues, and how to identify and respond.
8. Improve practice by reviewing and implementing safeguarding policies and procedures.
9. Coordinate local work to respond to child sexual exploitation, missing young people and human trafficking.

The LSCB have agreed that these 9 areas will form the basis of the Business Plan for 2013-14. Detail of implementation of these is given in the LSCB's Business Plan for 2013-14, which is available on the Southampton LSCB [website](#). The revised priorities have been identified following consideration of the information contained within this Annual Report alongside:

- Working Together 2013, Children Act 2004 and the Local Safeguarding Children Boards Regulations 2006.
- The South East LSCB Quality Assurance Framework.
- Priorities and themes identified by LSCB members at the 2013 Business Planning Day.
- Ofsted and Care Quality Commission 2012 inspection.
- Consideration of the proposed characteristics of LSCBs to be reviewed in future Ofsted inspections.

Appendix 1 Membership of the Southampton Local Safeguarding Children Board 2012-13

Member agency/organisation

Independent Chair

Vice Chair (Head of Safeguarding, Children's Services and Learning)

Director of Children's Services and Learning

LSCB Board Manager

Chair of Strategic Learning and Development Group

Chair of Monitoring & Evaluation sub committee

Chair of Professional Issues sub committee

Chair of Public Education & Awareness sub committee

Community & Voluntary sector

CAFCASS – Child and Family Court Advisory Support Service

Hampshire Constabulary

Youth Offending Team

National Probation Service – Hampshire Branch

Designated Doctor, NHS Southampton

Designated Nurse, NHS Southampton

NHS Southampton

Southampton University Hospital Trust

Southern Health

Solent Health

GP Safeguarding Lead

South Central Ambulance Service

Primary Head teacher

Further Education College

Southampton City Council Housing

Southampton Safeguarding Adults Board

Executive Member, Children's Services and Learning

Lay Member

Membership of Executive:

LSCB Independent Chair

LSCB Manager

Head of Safeguarding, Southampton City Council Children's Services

Prevention & Inclusion Services, Southampton City Council

Head of Public Protection, Hampshire Constabulary

Director, University Hospital Trust

SHIP Primary Care Trust (Health) Cluster

Appendix 2 Data Set for Southampton Local Safeguarding Children Board 2012-13

Description	2010-11	2011-12	2012-13
Number of contacts	11246	14652	12218
Number of new referrals	3172	3672	3882
Rate of referrals	733	794	822
% of Referrals that are re-referrals (within 1 year)	30%	29%	31%
% of referrals where decision made within 24 hours	N/A	79%	56%
% of Initial Assessments completed in 10 days	87%	60%	68%
% of Core Assessments completed in 35 days	63%	43%	38%
Number of strategy discussions started	1718	1710	1322
Number of Section 47s Started	N/A	1390	1328
Number of Initial Child Protection Conferences held (including Transfer-Ins)	437	438	426
Rate (per 10,000) of Initial Child Protection Conferences held (including Transfer-Ins)	101	95	92
% of Initial Child Protection Conferences held within 15 working days (including Transfer-Ins)	80%	72%	73%
% of Initial Child Protection Conferences resulting in a Child Protection Plan	77%	82%	84%
Number of Children with a Child Protection Plan	279	269	233
Rate (per 10,000) of Children with a Child Protection Plan	64	58	50
% of Review Child Protection Conferences held on time	98%	89%	99%
Number of children in need at end of period	1881	2046	2092
Rate (per 10,000) of Children in Need at end of period	434	443	445
% of CiN baseline audits Good/Outstanding	n/a	n/a	17%
% of CiN baseline audits Adequate	n/a	n/a	53%
% of CiN baseline audits inadequate	n/a	n/a	31%
Number of Children Looked After at end of period	386	429	482
Rate (per 10,000) of Children Looked After at end of period	89	93	103
Number of Children newly Looked After during period (count of episodes, not children)	173	193	219

Appendix 2 Data Set for Southampton Local Safeguarding Children Board 2012-13

Description	2010-11	2011-12	2012-13
Number of Children ceasing to be Looked After during period (count of episodes, not children)	165	153	173
CLA reviews on time (former NI 66)	85%	82%	82%
% of CLA placed 20 miles from their home (distance between current home and placement addresses, not the home address from which they came into care)	9%	10%	11%
Number of CLA placed with IFA foster carers	58	62	86
% of children with three or more placements in 12 months	9%	10%	10%
% of children looked after for 2.5 years or more and aged under 16 who have been in the same placement for two years, or are placed for adoption and their adoptive placement plus their previous placement totals 2 years	68%	77%	73%
% CLA with up to date Health Assessment (first HA within 28 days, then six monthly for children under 5 and yearly for children aged 5 and over)	new measure - n/a	new measure - n/a	new measure - n/a
% children looked after for a year continuously who have had a dental check in the year	90%	87%	88%
% of children looked after for a year continuously persistently absent from school	n/a	11%	5%
% of children looked after continuously for a year offending	14%	14%	12%
% of care leavers in contact	n/a	n/a	81%
% of care leavers in contact and in suitable accommodation	73% (old definition)	61% (old definition)	67% (old definition)
% of care leavers in contact and in Education, Employment or Training	53% (old definition)	44% (old definition)	41% (old definition)
Number of children in Private Fostering arrangements	5	6	10
Number of PF contacts	n/a	n/a	21
Number of new of new notifications	n/a	n/a	15
Number of new PF arrangements	n/a	n/a	12
Current PF arrangements	n/a	n/a	6
Average SW Caseload - IAT, Protection and Court	22.6 (old definition including staff on maternity leave)	23.4 (old definition including staff on maternity leave)	20.7 (old definition including staff on maternity leave)

Appendix 2 Data Set for Southampton Local Safeguarding Children Board 2012-13

Description	2010-11	2011-12	2012-13
Average SW Caseload - Pathways	22.5 (old definition including staff on maternity leave)	19.1 (old definition including staff on maternity leave)	18.8 (old definition including staff on maternity leave)
Number of children using an advocate	1	1	1
Total number of complaints made	138	182	179
Number of Common Assessment Framework (PreCAF) assessments completed: (pre-birth 5).	N/A	498	479
Number of Common Assessment Framework (CAF) assessments completed	N/A	169	237
Total CAFs/ PreCAFs	N/A	667	716
Social Care workforce – Establishment	N/A		89.4
Social Care workforce – numbers in post	N/A		91.4
Social Care workforce – permanent staff	N/A		71.9
Social Care workforce – temporary staff	N/A		19.5
Vacancy rate of key parts of the Children's Workforce (annual average): Social Care.	N/A		19.6%
Infant Mortality rate	N/A	5.5	3.9
Child Death Reviews undertaken on behalf of LSCB	N/A		1.0
Emergency hospital admissions caused by accidental and deliberate injuries to children	N/A	164.8	156.8
% Total Absence in Schools	N/A	5.8	5.4
% Secondary Fixed Term Exclusions	N/A	23.3	16.1
Number of children killed or seriously injured in Road Traffic Accidents	N/A	13	19
Services for Privately Fostered Children (OfSTED)	N/A	Good	Good
Services to support Fostering (OfSTED)	N/A	Outstanding	Outstanding
Adoption Services (OfSTED)	N/A	Good	Good
Rate of 1 st time entrants to the Criminal Justice System per 100,000	N/A	841	1011
Proportion of children living in Poverty	N/A	26.8	n/a
CLA / Safeguarding Announced Inspection (OfSTED)	N/A	Adequate	Adequate

